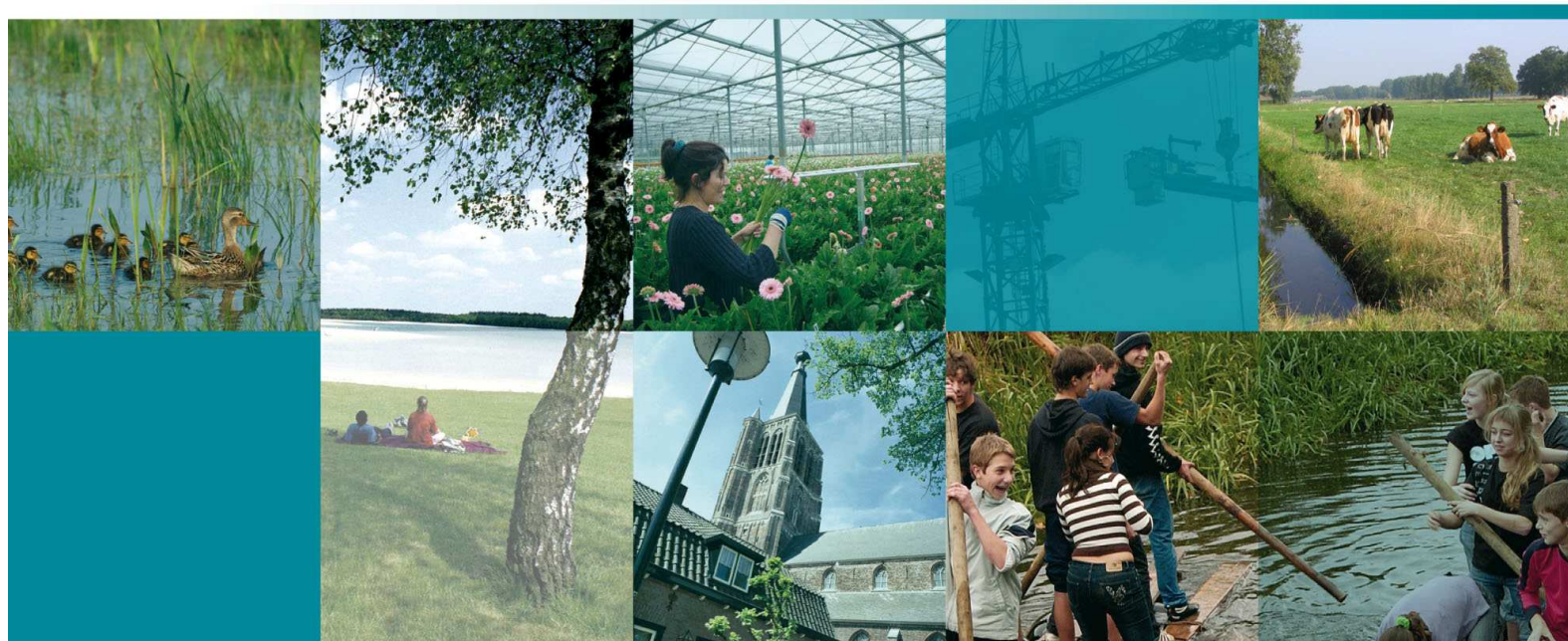


# Het vestigen van een Kalvercluster in het LOG Kootwijkerbroek-Lunteren *Kaartbijlage*



# Het vestigen van een Kalvercluster in het LOG Kootwijkerbroek-Lunteren

## *Kaartbijlage*

<b>In opdracht van</b>	Stichting Vernieuwing Gelderse Vallei, Dienst Landelijk Gebied en de provincie Gelderland
<b>Opgesteld door</b>	SRE Milieudienst, afdeling Gemeenten
<b>Auteur</b>	Fred Stouthart en Swen Waschke
<b>Projectnummer</b>	476891/5
<b>Datum</b>	20 augustus 2009
<b>Status</b>	Concept

## Inhoudsopgave

### Voorgrondbelasting

Ontwikkelplan	Scenario O
Ontwikkelplan + Chemische Luchtwater	Scenario O+ChLw
Ontwikkelplan + Biologische Luchtwater	Scenario O+BioLw
Ontwikkelplan met hogere schoorsteen	Scenario A1:hs
Verplaatsen locatie Kok	Scenario A2:vep
Verplaatsen locatie kok + hogere schoorsteen	Scenario A3:vep+hs
Omdraaien Locatie Kok	Scenario A4:os

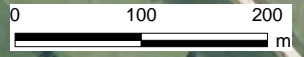
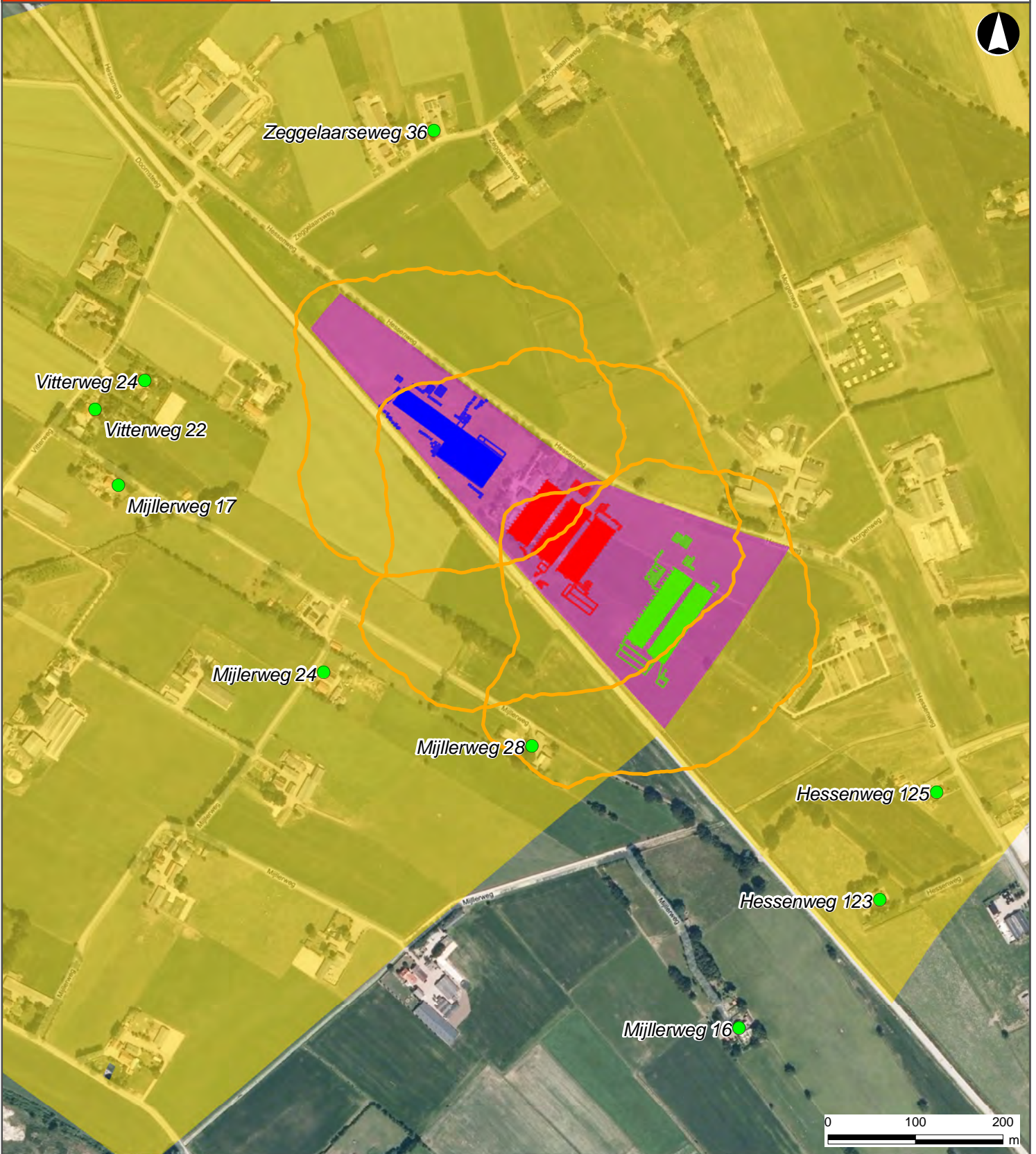
### Achtergrondbelasting

Huidige situatie	Scenario H
Ontwikkelplan	Scenario O
Ontwikkelplan + Chemische Luchtwater	Scenario O+ChLw
Ontwikkelplan + Biologische Luchtwater	Scenario O+BioLw
Ontwikkelplan met hogere schoorsteen	Scenario A1:hs
Verplaatsen locatie Kok	Scenario A2:vep
Verplaatsen locatie kok + hogere schoorsteen	Scenario A3:vep+hs
Omdraaien Locatie Kok	Scenario A4:os



# Geurcontouren conform Ontwikkelplan

Scenario O



## Legenda

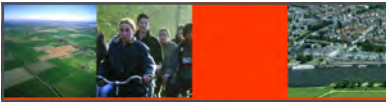
- |  |  |
|--|--|
| <span style="color: green;">●</span> Geurgevoelige objecten  | <b>Locaties</b>  |
| <span style="border-bottom: 2px solid orange; width: 20px; display: inline-block;"></span> 14 oue/m <sup>3</sup> Contour       | <span style="background-color: blue; width: 15px; height: 10px; display: inline-block;"></span> Bronkhorst |
| <span style="background-color: purple; width: 15px; height: 10px; display: inline-block;"></span> Plangebied                   | <span style="background-color: red; width: 15px; height: 10px; display: inline-block;"></span> Werfhorst   |
| <span style="background-color: yellow; width: 15px; height: 10px; display: inline-block;"></span> LOG Kootwijkerbroek-Lunteren | <span style="background-color: green; width: 15px; height: 10px; display: inline-block;"></span> Kok       |



Opdrachtgever: Stichting Vernieuwing Gelderse Vallei,  
Dienst Landelijk Gebied en de  
provincie Gelderland

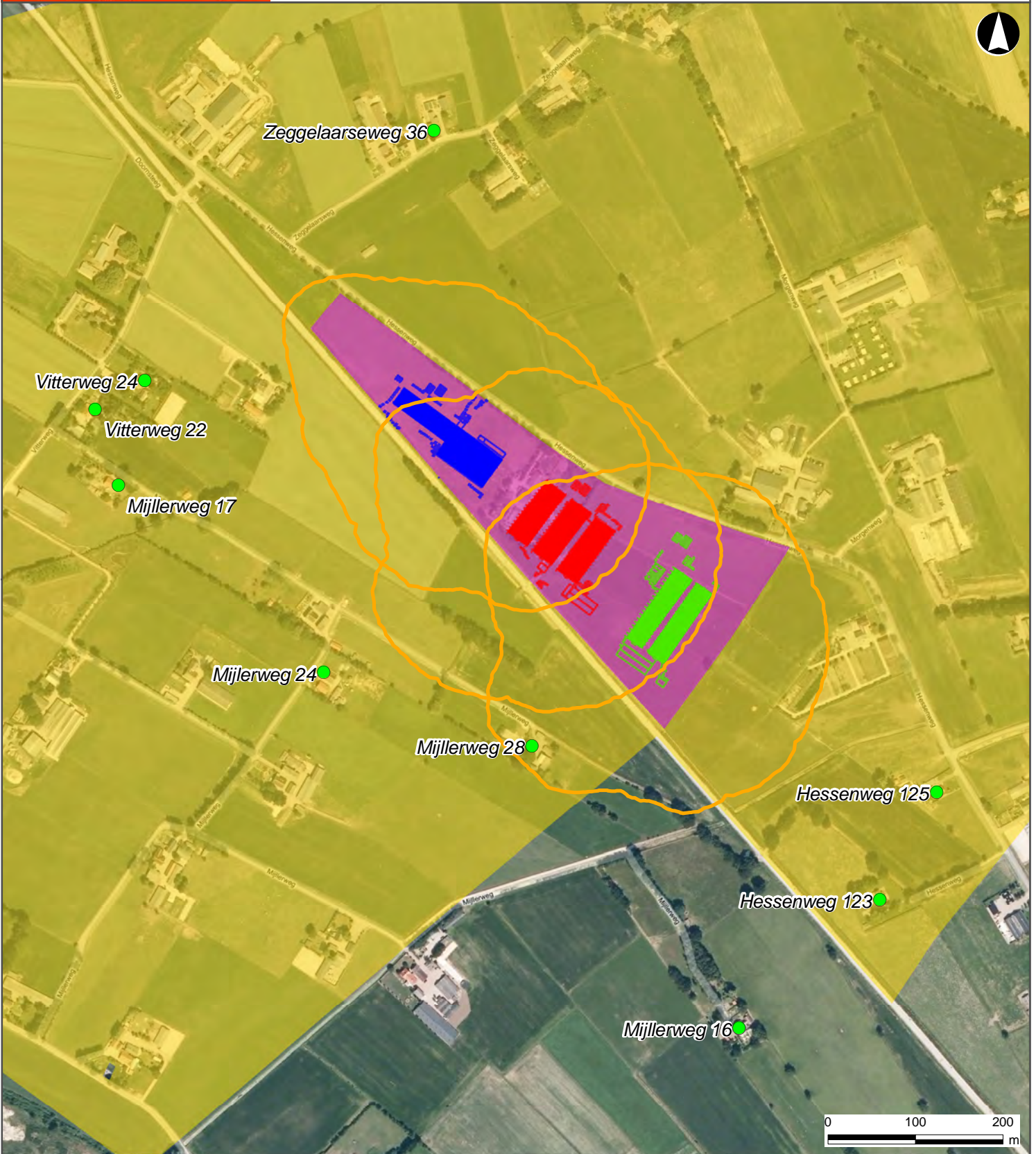
Projectnummer: 476895  
Kaartnummer: 476895.001  
Datum: 19 augustus 2009  
Auteur: Swen Waschk  
Formaat: A4  
Schaal: 1 op 6.000  
Copyright: © 2009 Microsoft Corporation





# Geurcontouren met Chemische luchtwater

Scenario O+ChLw



## Legenda

- |  |  |
|--|--|
| <span style="color: green;">●</span> Geurgevoelige objecten  | <b>Locaties</b>  |
| <span style="border-bottom: 2px solid orange; width: 20px; display: inline-block;"></span> 14 oue/m <sup>3</sup> Contour       | <span style="background-color: blue; width: 20px; height: 10px; display: inline-block;"></span> Bronkhorst |
| <span style="background-color: purple; width: 20px; height: 10px; display: inline-block;"></span> Plangebied                   | <span style="background-color: red; width: 20px; height: 10px; display: inline-block;"></span> Werfhorst   |
| <span style="background-color: yellow; width: 20px; height: 10px; display: inline-block;"></span> LOG Kootwijkerbroek-Lunteren | <span style="background-color: green; width: 20px; height: 10px; display: inline-block;"></span> Kok       |



Opdrachtgever: Stichting Vernieuwing Gelderse Vallei,  
Dienst Landelijk Gebied en de  
provincie Gelderland

Projectnummer: 476895  
Kaartnummer: 476895.002  
Datum: 19 augustus 2009  
Auteur: Swen Waschk  
Formaat: A4  
Schaal: 1 op 6.000  
Copyright: © 2009 Microsoft Corporation



# Geurcontouren met Biologische luchtwater

Scenario O+BioLw



## Legenda

- |   |  |
|---|--|
| <span style="color: green;">●</span> Geurgevoelige objecten   | <b>Locaties</b>  |
| <span style="border: 1px solid orange; display: inline-block; width: 15px; height: 10px;"></span> 14 oue/m <sup>3</sup> Contour | <span style="background-color: blue; display: inline-block; width: 15px; height: 10px;"></span> Bronkhorst |
| <span style="background-color: purple; display: inline-block; width: 15px; height: 10px;"></span> Plangebied                    | <span style="background-color: red; display: inline-block; width: 15px; height: 10px;"></span> Werfhorst   |
| <span style="background-color: yellow; display: inline-block; width: 15px; height: 10px;"></span> LOG Kootwijkerbroek-Lunteren  | <span style="background-color: green; display: inline-block; width: 15px; height: 10px;"></span> Kok       |



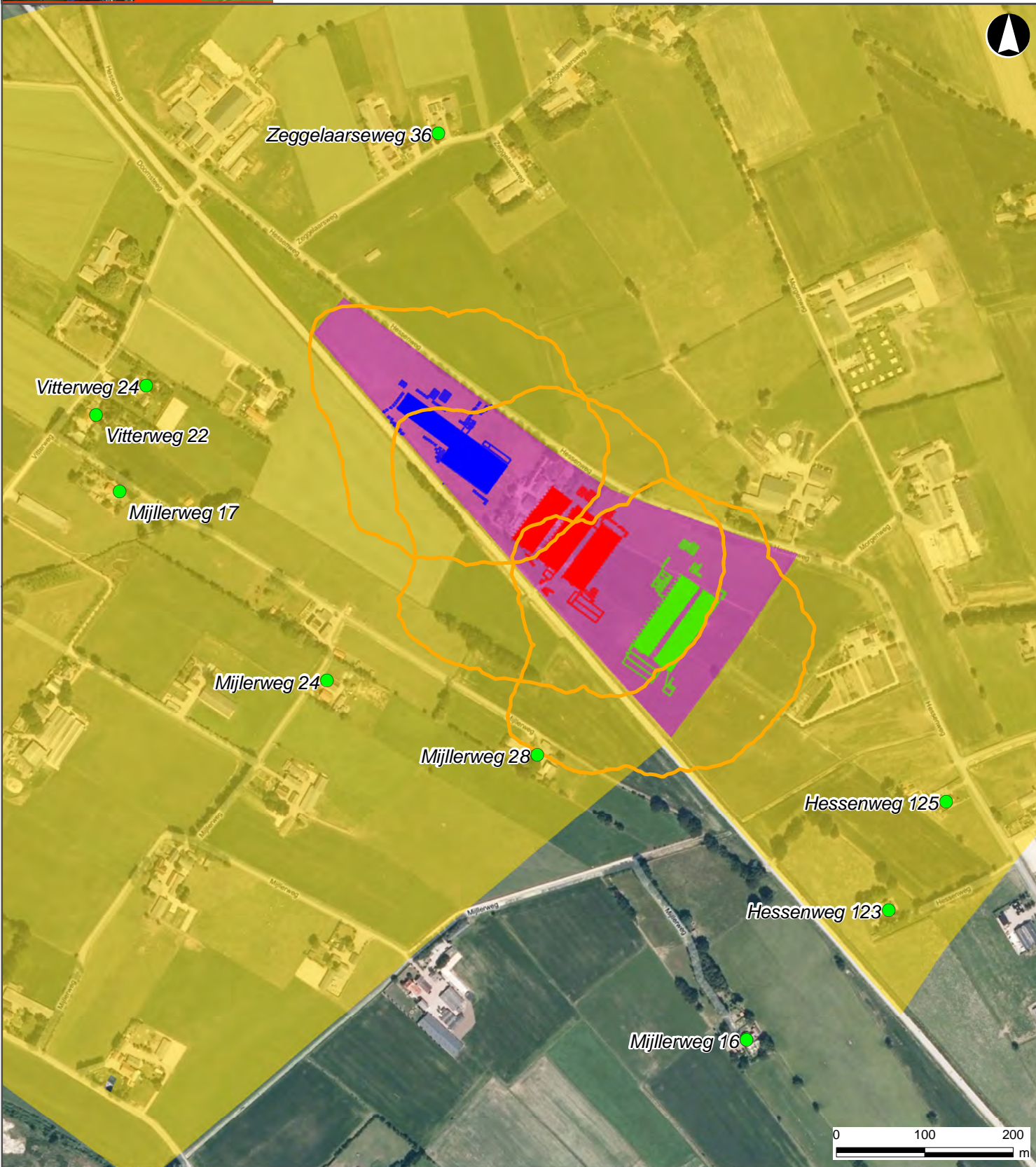
Opdrachtgever: Stichting Vernieuwing Gelderse Vallei,  
Dienst Landelijk Gebied en de  
provincie Gelderland

Projectnummer: 476895  
Kaartnummer: 476895.003  
Datum: 19 augustus 2009  
Auteur: Swen Waschk  
Formaat: A4  
Schaal: 1 op 6.000  
Copyright: © 2009 Microsoft Corporation



# Geurcontouren met "hogere schoorsteen"

Scenario A1:hs



## Legenda

- |  |  |
|--|--|
| <span style="color: green;">●</span> Geurgevoelige objecten  | <b>Locaties</b>  |
| <span style="border-bottom: 1px solid orange; width: 20px; display: inline-block;"></span> 14 oue/m <sup>3</sup> Contour       | <span style="background-color: blue; width: 15px; height: 15px; display: inline-block;"></span> Bronkhorst |
| <span style="background-color: purple; width: 15px; height: 15px; display: inline-block;"></span> Plangebied                   | <span style="background-color: red; width: 15px; height: 15px; display: inline-block;"></span> Werfhorst   |
| <span style="background-color: yellow; width: 15px; height: 15px; display: inline-block;"></span> LOG Kootwijkerbroek-Lunteren | <span style="background-color: green; width: 15px; height: 15px; display: inline-block;"></span> Kok       |



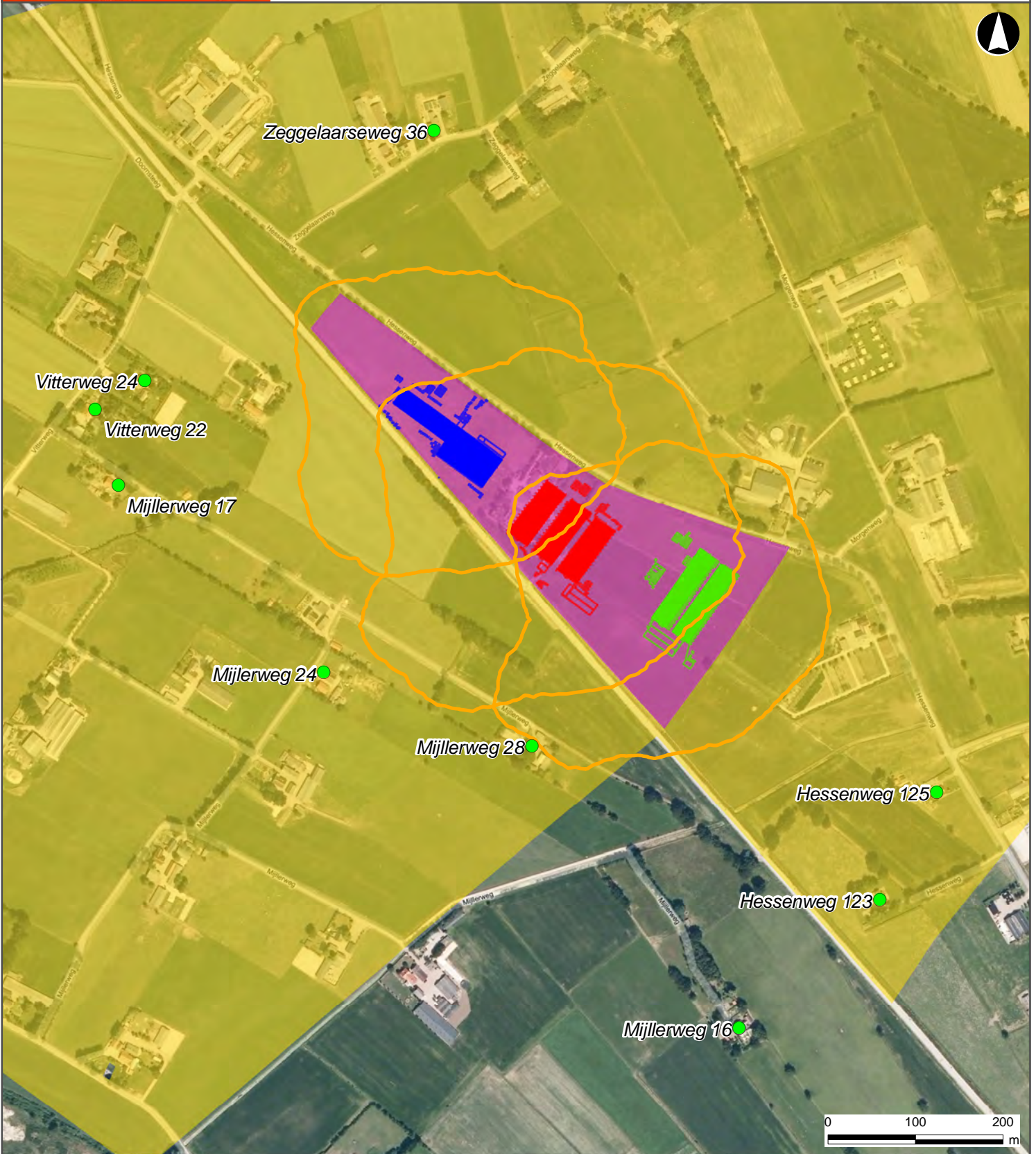
Opdrachtgever: Stichting Vernieuwing Gelderse Vallei,  
Dienst Landelijk Gebied en de  
provincie Gelderland

Projectnummer: 476895  
Kaartnummer: 476895.004  
Datum: 19 augustus 2009  
Auteur: Swen Waschk  
Formaat: A4  
Schaal: 1 op 6.000  
Copyright: © 2009 Microsoft Corporation



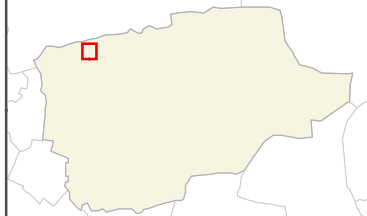
# Geurcontouren verplaatsen locatie Kok

Scenario A2:vep



## Legenda

- |   |  |
|---|--|
| <span style="color: green;">●</span> Geurgevoelige objecten   | <b>Locaties</b>  |
| <span style="border: 1px solid orange; display: inline-block; width: 15px; height: 10px;"></span> 14 oue/m <sup>3</sup> Contour | <span style="background-color: blue; display: inline-block; width: 15px; height: 10px;"></span> Bronkhorst |
| <span style="background-color: purple; display: inline-block; width: 15px; height: 10px;"></span> Plangebied                    | <span style="background-color: red; display: inline-block; width: 15px; height: 10px;"></span> Werfhorst   |
| <span style="background-color: yellow; display: inline-block; width: 15px; height: 10px;"></span> LOG Kootwijkerbroek-Lunteren  | <span style="background-color: green; display: inline-block; width: 15px; height: 10px;"></span> Kok       |



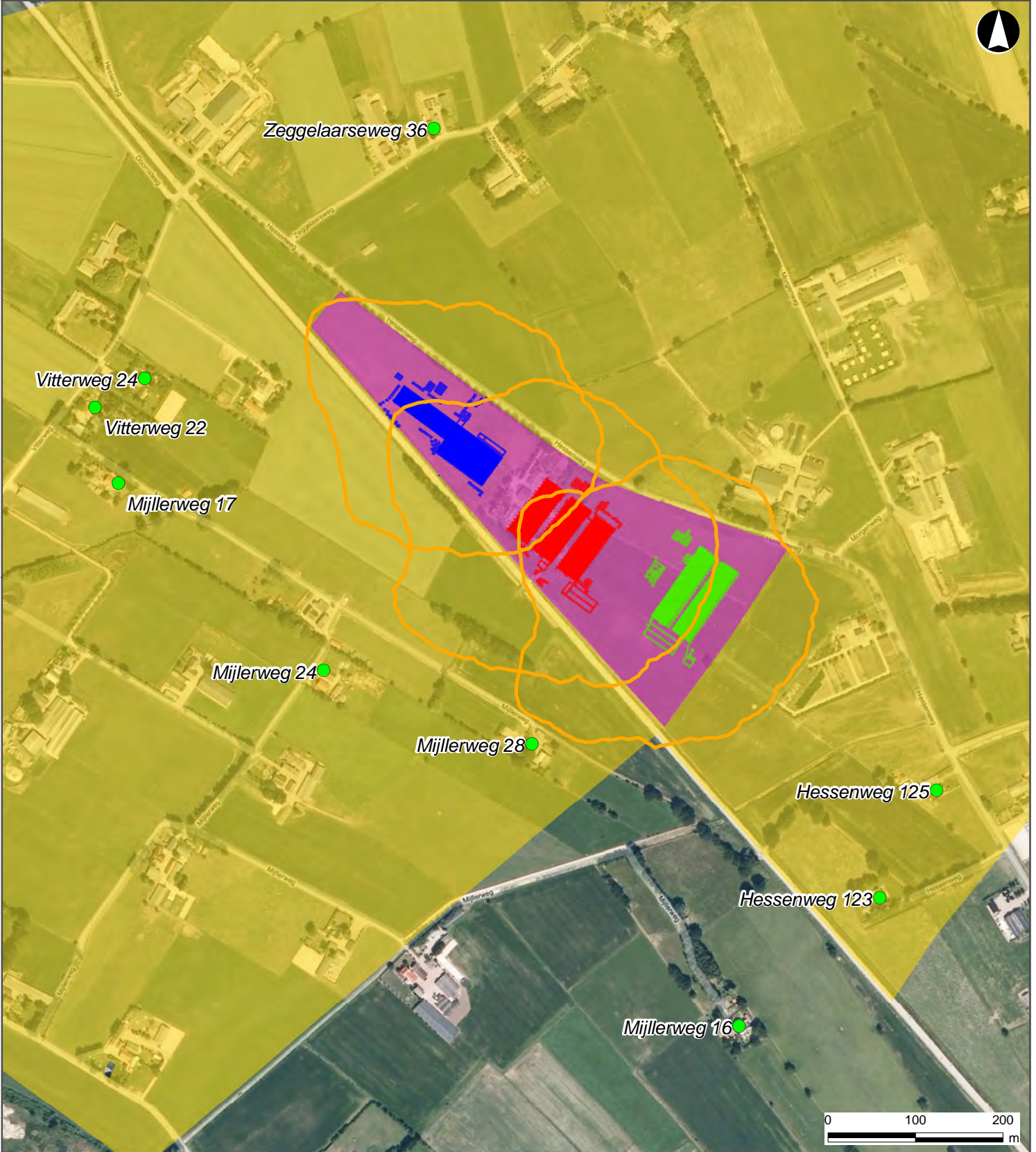
Opdrachtgever: Stichting Vernieuwing Gelderse Vallei,  
Dienst Landelijk Gebied en de provincie Gelderland

Projectnummer: 476895  
Kaartnummer: 476895.005  
Datum: 19 augustus 2009  
Auteur: Swen Waschk  
Formaat: A4  
Schaal: 1 op 6.000  
Copyright: © 2009 Microsoft Corporation



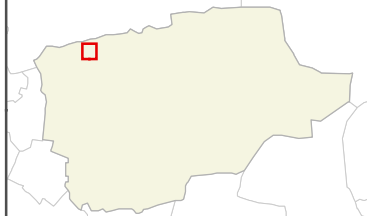
# Geurcontouren verplaatsen locatie Kok met hogere schoorsteen

Scenario A3:vep+hs



## Legenda

- |   |  |
|---|--|
| <span style="color: green;">●</span> Geurgevoelige objecten   | <b>Locaties</b>  |
| <span style="border: 1px solid orange; display: inline-block; width: 15px; height: 10px;"></span> 14 oue/m <sup>3</sup> Contour | <span style="background-color: blue; display: inline-block; width: 15px; height: 10px;"></span> Bronkhorst |
| <span style="background-color: purple; display: inline-block; width: 15px; height: 10px;"></span> Plangebied                    | <span style="background-color: red; display: inline-block; width: 15px; height: 10px;"></span> Werfhorst   |
| <span style="background-color: yellow; display: inline-block; width: 15px; height: 10px;"></span> LOG Kootwijkerbroek-Lunteren  | <span style="background-color: green; display: inline-block; width: 15px; height: 10px;"></span> Kok       |



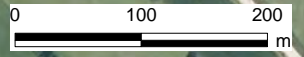
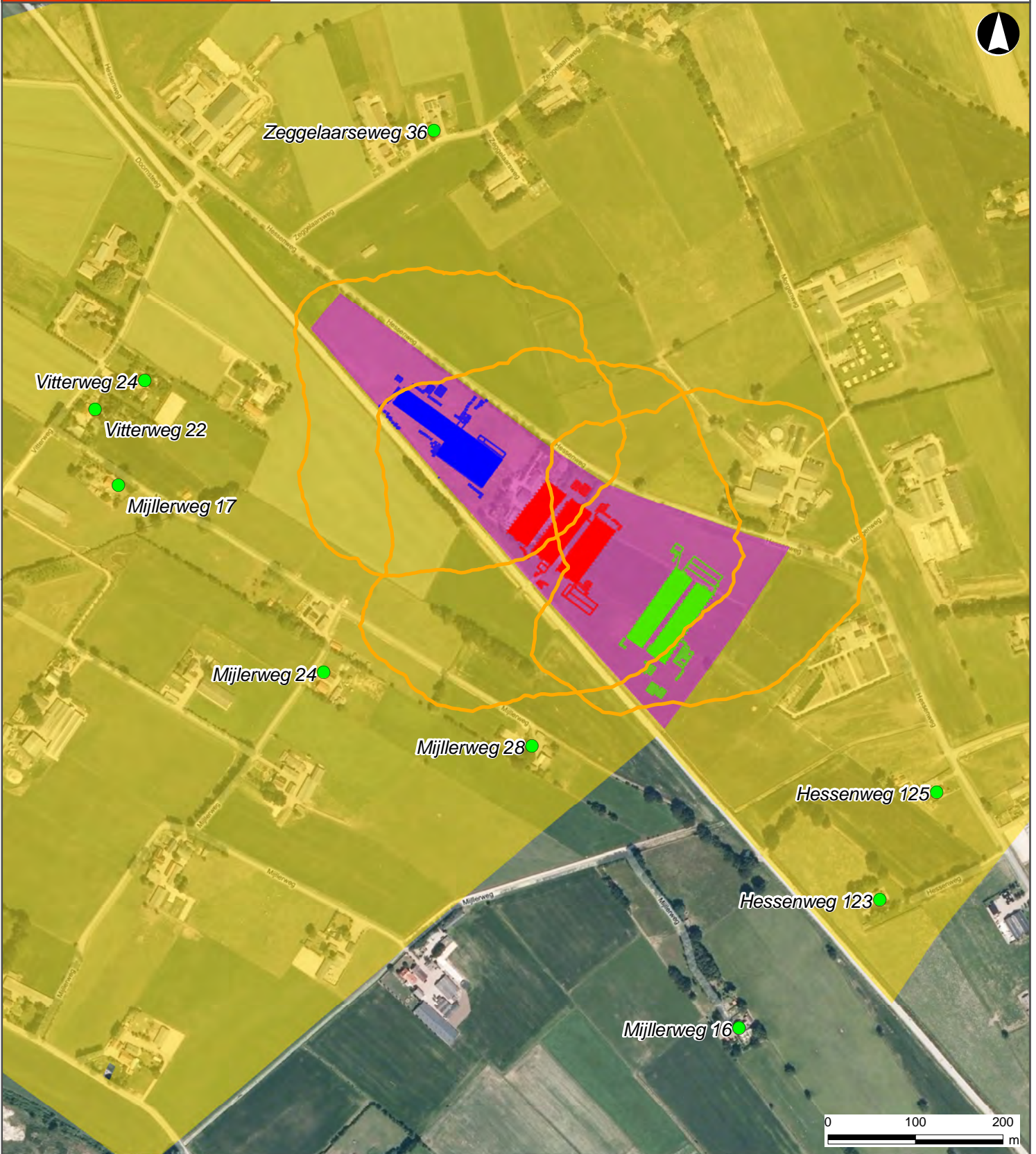
Opdrachtgever: Stichting Vernieuwing Gelderse Vallei,  
Dienst Landelijk Gebied en de  
provincie Gelderland

Projectnummer: 476895  
Kaartnummer: 476895.006  
Datum: 19 augustus 2009  
Auteur: Swen Waschk  
Formaat: A4  
Schaal: 1 op 6.000  
Copyright: © 2009 Microsoft Corporation



# Geurcontouren omdraaien locatie Kok

Scenario A4:os



## Legenda

- |   |  |
|---|--|
| <span style="color: green;">●</span> Geurgevoelige objecten   | <b>Locaties</b>  |
| <span style="border: 1px solid orange; display: inline-block; width: 15px; height: 10px;"></span> 14 oue/m <sup>3</sup> Contour | <span style="background-color: blue; display: inline-block; width: 15px; height: 10px;"></span> Bronkhorst |
| <span style="background-color: purple; display: inline-block; width: 15px; height: 10px;"></span> Plangebied                    | <span style="background-color: red; display: inline-block; width: 15px; height: 10px;"></span> Werfhorst   |
| <span style="background-color: yellow; display: inline-block; width: 15px; height: 10px;"></span> LOG Kootwijkerbroek-Lunteren  | <span style="background-color: green; display: inline-block; width: 15px; height: 10px;"></span> Kok       |



Opdrachtgever: Stichting Vernieuwing Gelderse Vallei,  
Dienst Landelijk Gebied en de  
provincie Gelderland

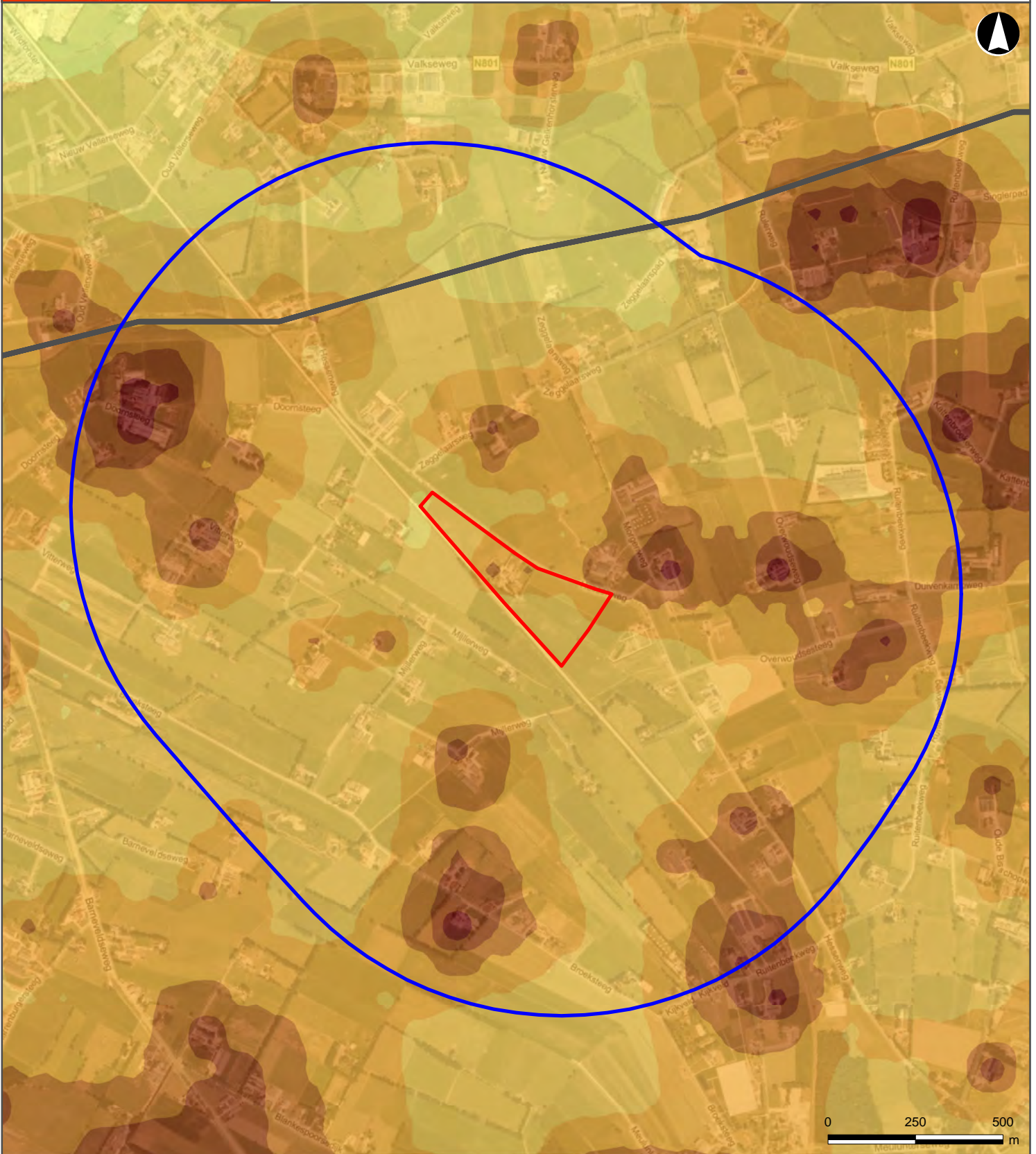
Projectnummer: 476895  
Kaartnummer: 476895.007  
Datum: 19 augustus 2009  
Auteur: Swen Waschk  
Formaat: A4  
Schaal: 1 op 6.000  
Copyright: © 2009 Microsoft Corporation















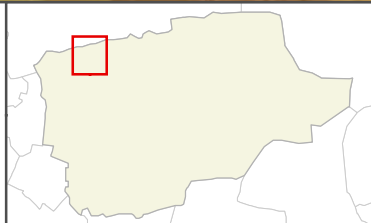
# Achtergrondbelasting huidige situatie

Scenario H



## Legenda

	Plangebied	<b>Achtergrondbelasting (in <math>\text{ou}_E/\text{m}^3</math>)</b>
	1 km buffer	
	Gemeentegrens	
	0 - 6	
	6 - 10	
	10 - 14	
	14 - 20	
	20 - 30	
	30 - 50	
	> 50	



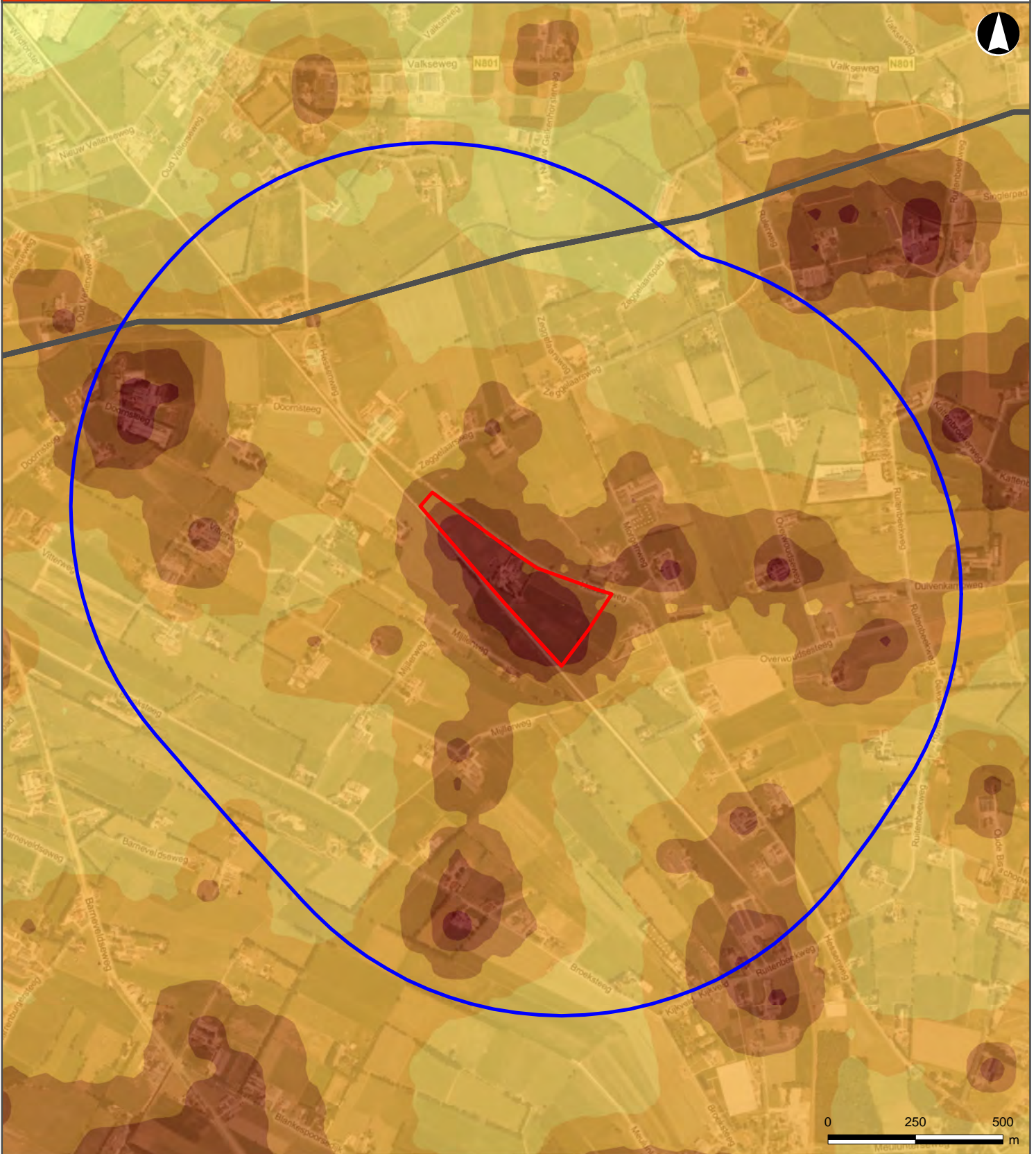
Opdrachtgever: Stichting Vernieuwing Gelderse Vallei, Dienst Landelijk Gebied en de provincie Gelderland  
 Projectnummer: 476895  
 Kaartnummer: 476895.008  
 Datum: 19 augustus 2009  
 Auteur: Swen Waschik  
 Formaat: A4  
 Schaal: 1 op 15.000  
 Copyright: © 2009 Microsoft Corporation






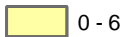








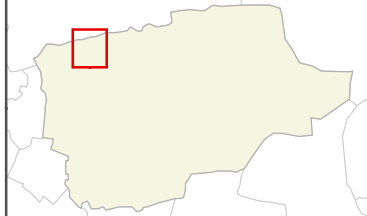
# Achtergrondbelasting conform ontwikkelplan

Scenario O



## Legenda

	Plangebied	<b>Achtergrondbelasting (in <math>\text{ouE}/\text{m}^3</math>)</b>
	1 km buffer	
	Gemeentegrens	
	0 - 6	
	6 - 10	
	10 - 14	
	14 - 20	
	20 - 30	
	30 - 50	
	> 50	

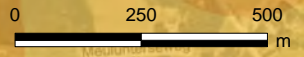
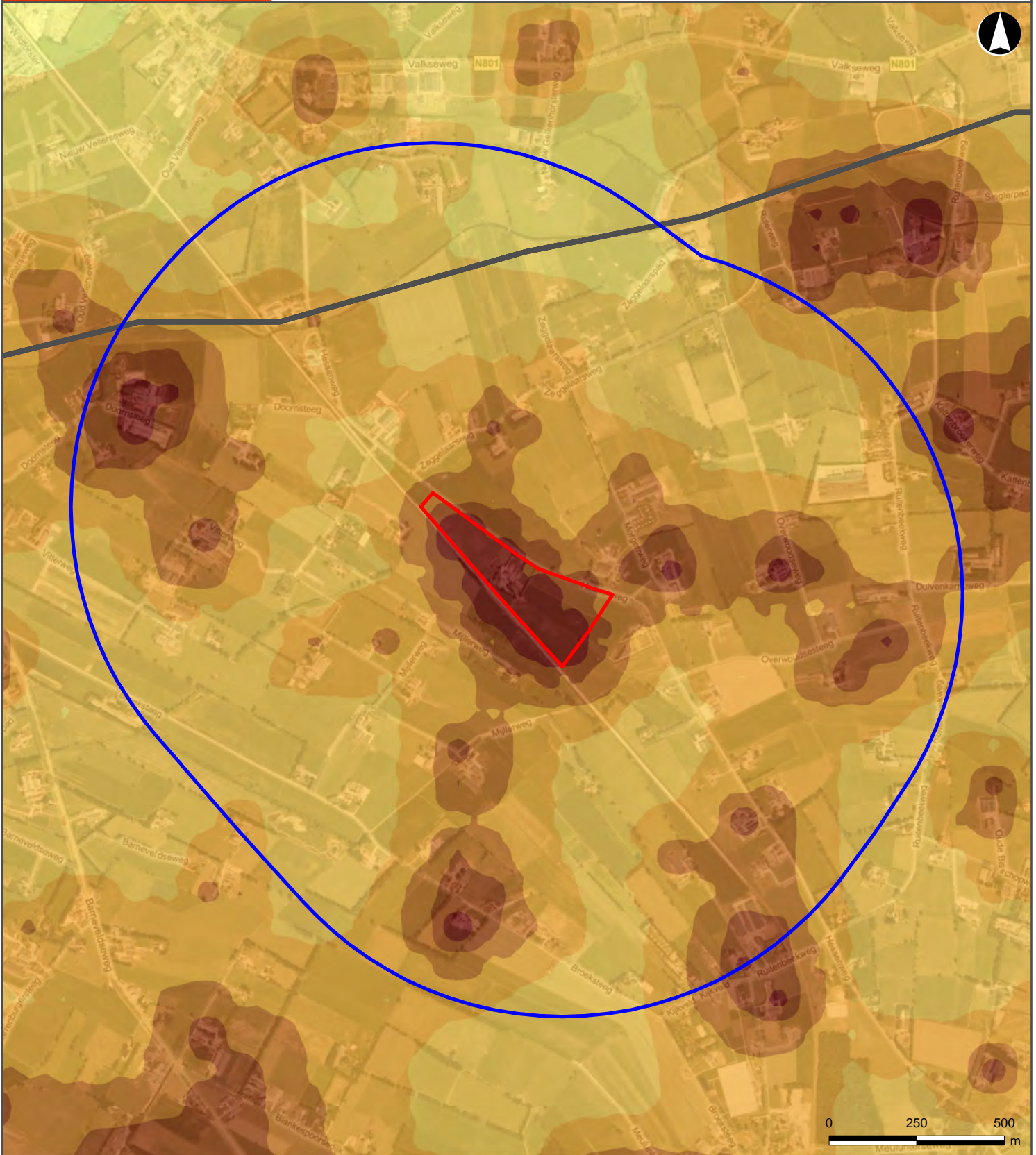


Opdrachtgever: Stichting Vernieuwing Gelderse Vallei, Dienst Landelijk Gebied en de provincie Gelderland  
 Projectnummer: 476895  
 Kaartnummer: 476895.009  
 Datum: 19 augustus 2009  
 Auteur: Swen Waschik  
 Formaat: A4  
 Schaal: 1 op 15.000  
 Copyright: © 2009 Microsoft Corporation













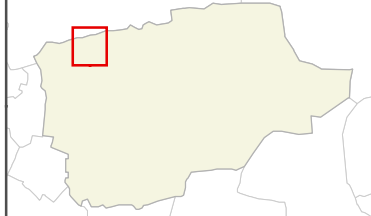
# Achtergrondbelasting met Chemische Luchtwater

Scenario O+ChLw



## Legenda

	Plangebied	<b>Achtergrondbelasting (in <math>\text{ou}_E/\text{m}^3</math>)</b>
	1 km buffer	
	Gemeentegrens	 0 - 6
		 6 - 10
		 10 - 14
		 14 - 20
		 20 - 30
		 30 - 50
		 > 50



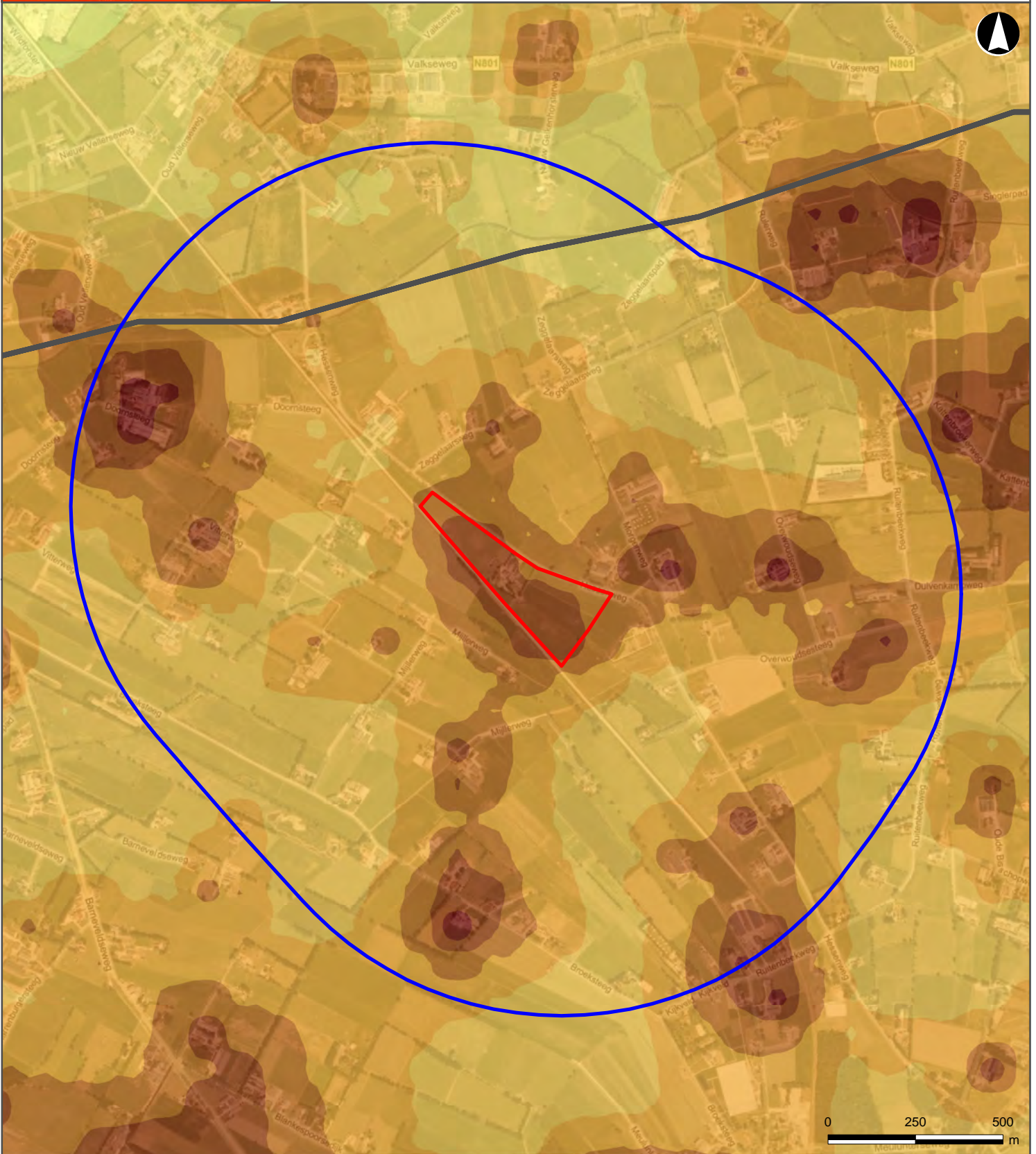
Opdrachtgever: Stichting Vernieuwing Gelderse Vallei, Dienst Landelijk Gebied en de provincie Gelderland  
 Projectnummer: 476895  
 Kaartnummer: 476895.010  
 Datum: 19 augustus 2009  
 Auteur: Swen Waschik  
 Formaat: A4  
 Schaal: 1 op 15.000  
 Copyright: © 2009 Microsoft Corporation






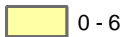








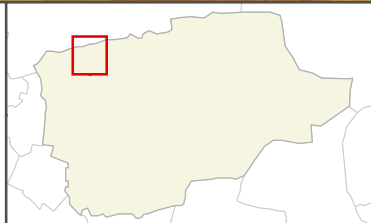
# Achtergrondbelasting met Biologische Luchtwasser

Scenario O+BioLw



## Legenda

	Plangebied	<b>Achtergrondbelasting (in <math>\text{ouE}/\text{m}^3</math>)</b>
	1 km buffer	
	Gemeentegrens	
	0 - 6	
	6 - 10	
	10 - 14	
	14 - 20	
	20 - 30	
	30 - 50	
	> 50	

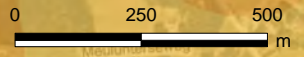
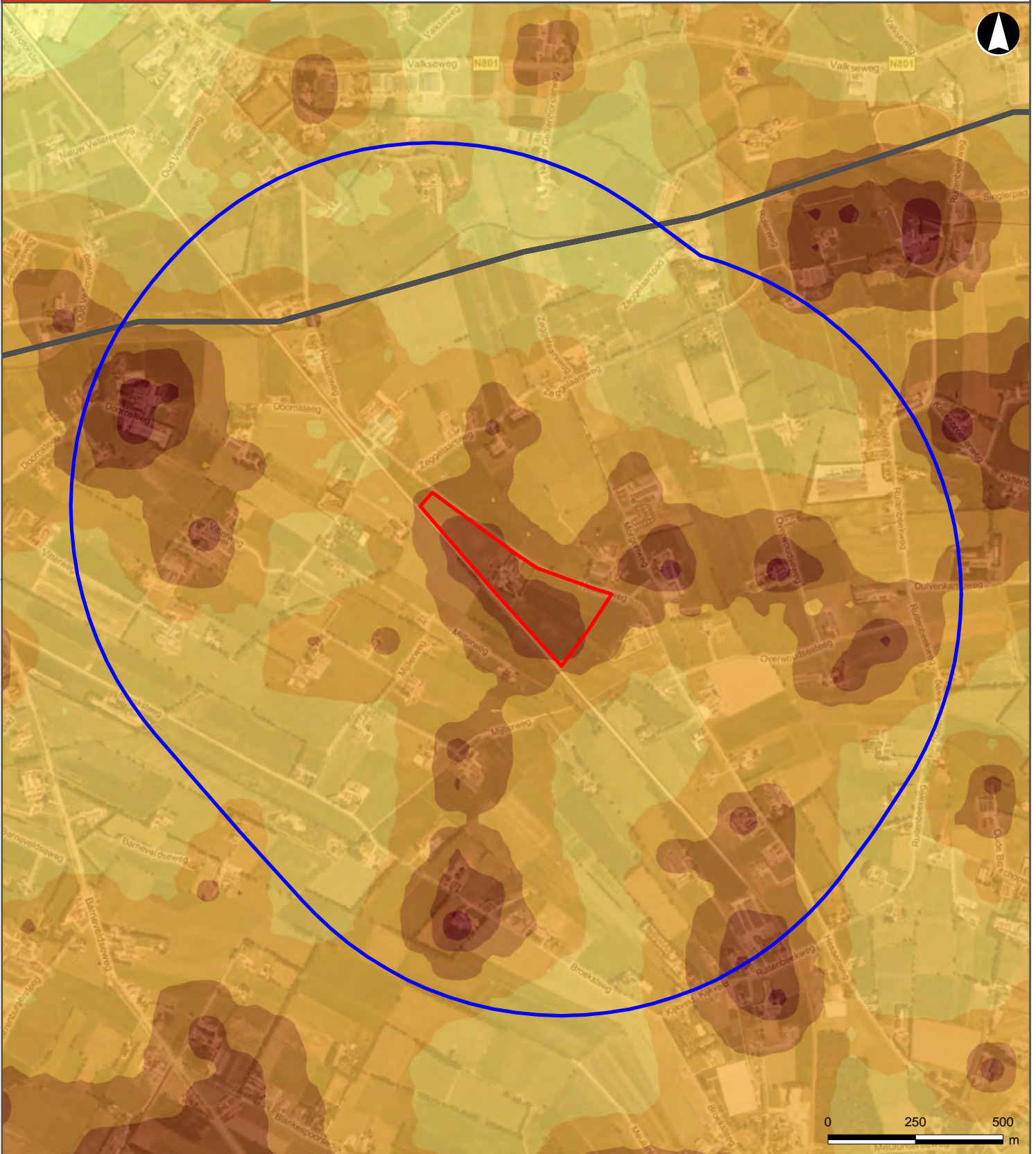


Opdrachtgever: Stichting Vernieuwing Gelderse Vallei, Dienst Landelijk Gebied en de provincie Gelderland  
 Projectnummer: 476895  
 Kaartnummer: 476895.011  
 Datum: 19 augustus 2009  
 Auteur: Swen Waschik  
 Formaat: A4  
 Schaal: 1 op 15.000  
 Copyright: © 2009 Microsoft Corporation




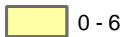








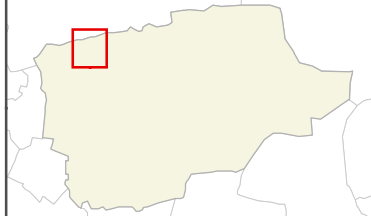
# Achtergrondbelasting met "hogere schoorsteen"

Scenario A1:hs



## Legenda

	Plangebied	<b>Achtergrondbelasting (in <math>\text{ouE}/\text{m}^3</math>)</b>
	1 km buffer	
	Gemeentegrens	 0 - 6
		 6 - 10
		 10 - 14
		 14 - 20
		 20 - 30
		 30 - 50
		 > 50



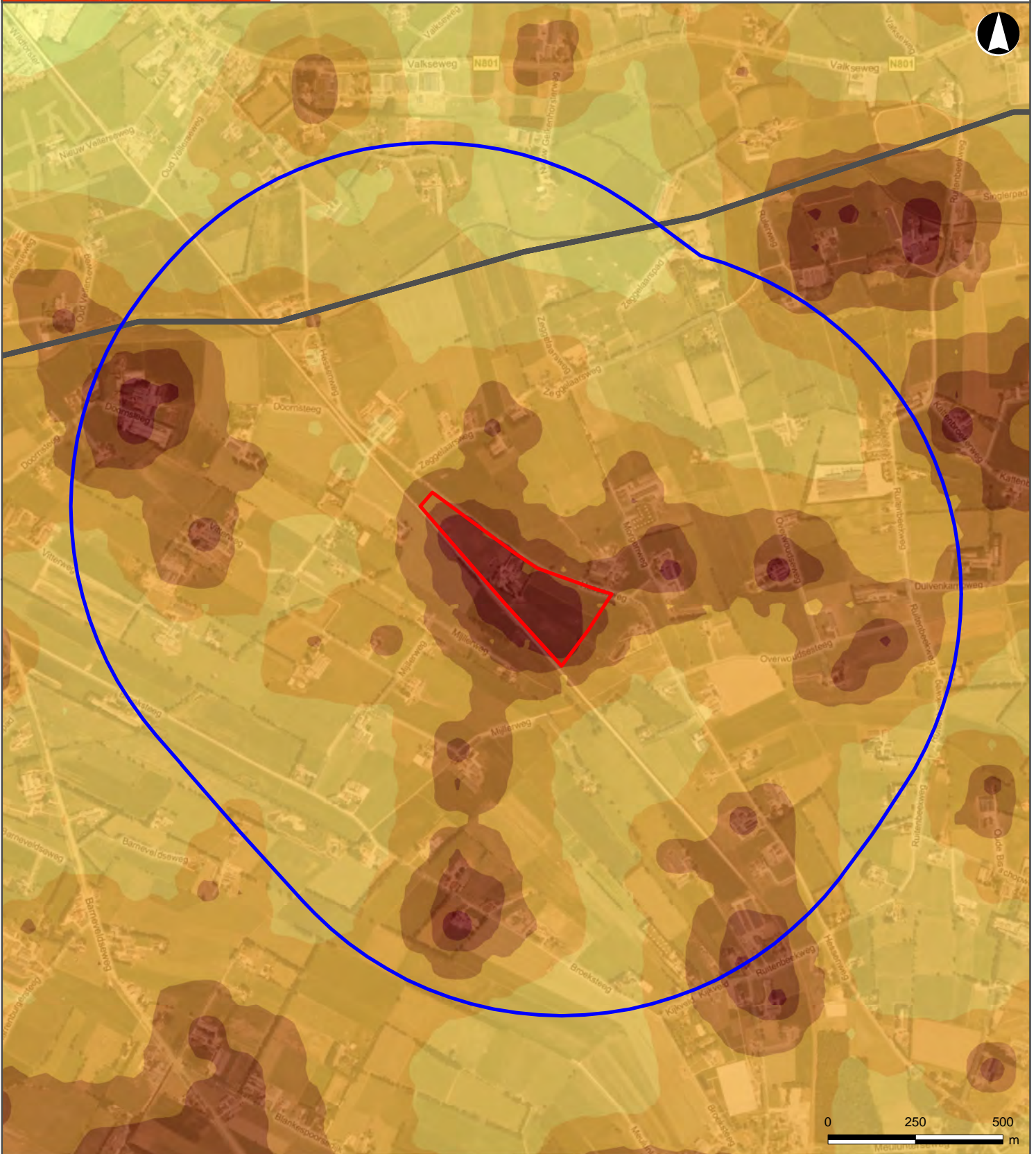
Opdrachtgever: Stichting Vernieuwing Gelderse Vallei, Dienst Landelijk Gebied en de provincie Gelderland  
 Projectnummer: 476895  
 Kaartnummer: 476895.012  
 Datum: 19 augustus 2009  
 Auteur: Swen Waschik  
 Formaat: A4  
 Schaal: 1 op 15.000  
 Copyright: © 2009 Microsoft Corporation






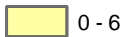








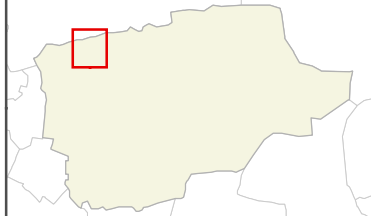
# Achtergrondbelasting verplaatsen locatie kok

Scenario A2:vep



## Legenda

	Plangebied	<b>Achtergrondbelasting (in <math>ou_E/m^3</math>)</b>
	1 km buffer	
	Gemeentegrens	
	0 - 6	
	6 - 10	
	10 - 14	
	14 - 20	
	20 - 30	
	30 - 50	
	> 50	



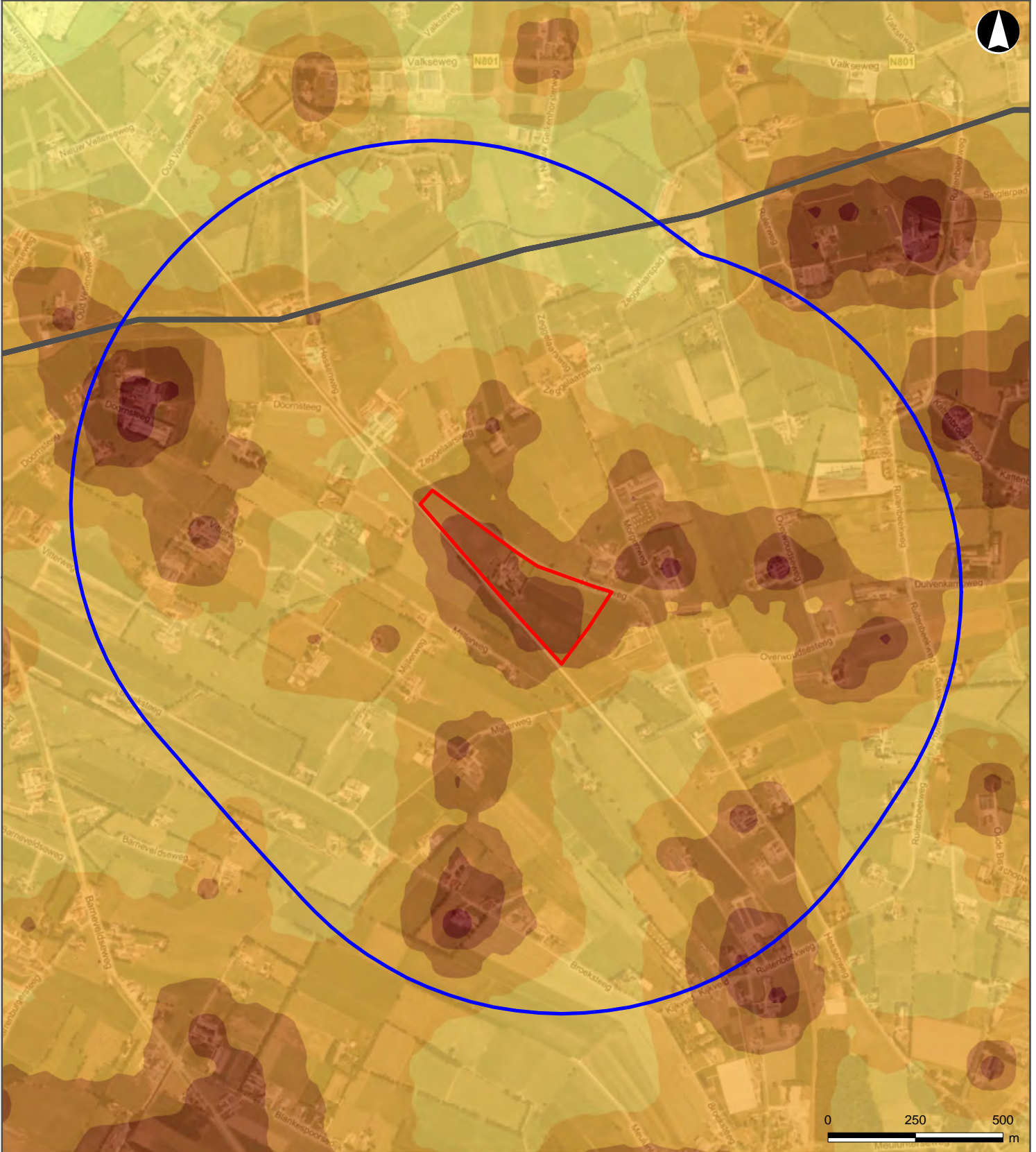
Opdrachtgever: Stichting Vernieuwing Gelderse Vallei, Dienst Landelijk Gebied en de provincie Gelderland  
 Projectnummer: 476895  
 Kaartnummer: 476895.013  
 Datum: 19 augustus 2009  
 Auteur: Swen Waschik  
 Formaat: A4  
 Schaal: 1 op 15.000  
 Copyright: © 2009 Microsoft Corporation





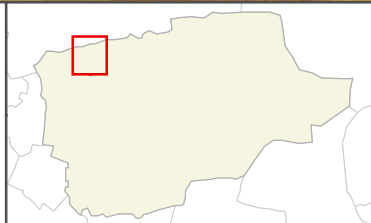
# Achtergrondbelasting verplaatsen locatie kok met hogere schoorsteen

Scenario A3:vep+hs



## Legenda

	Plangebied	Achtergrondbelasting (in $\text{ouE}/\text{m}^3$ )	
	1 km buffer		
	Gemeentegrens		0 - 6
			6 - 10
			10 - 14
			14 - 20
			20 - 30
			30 - 50
			> 50



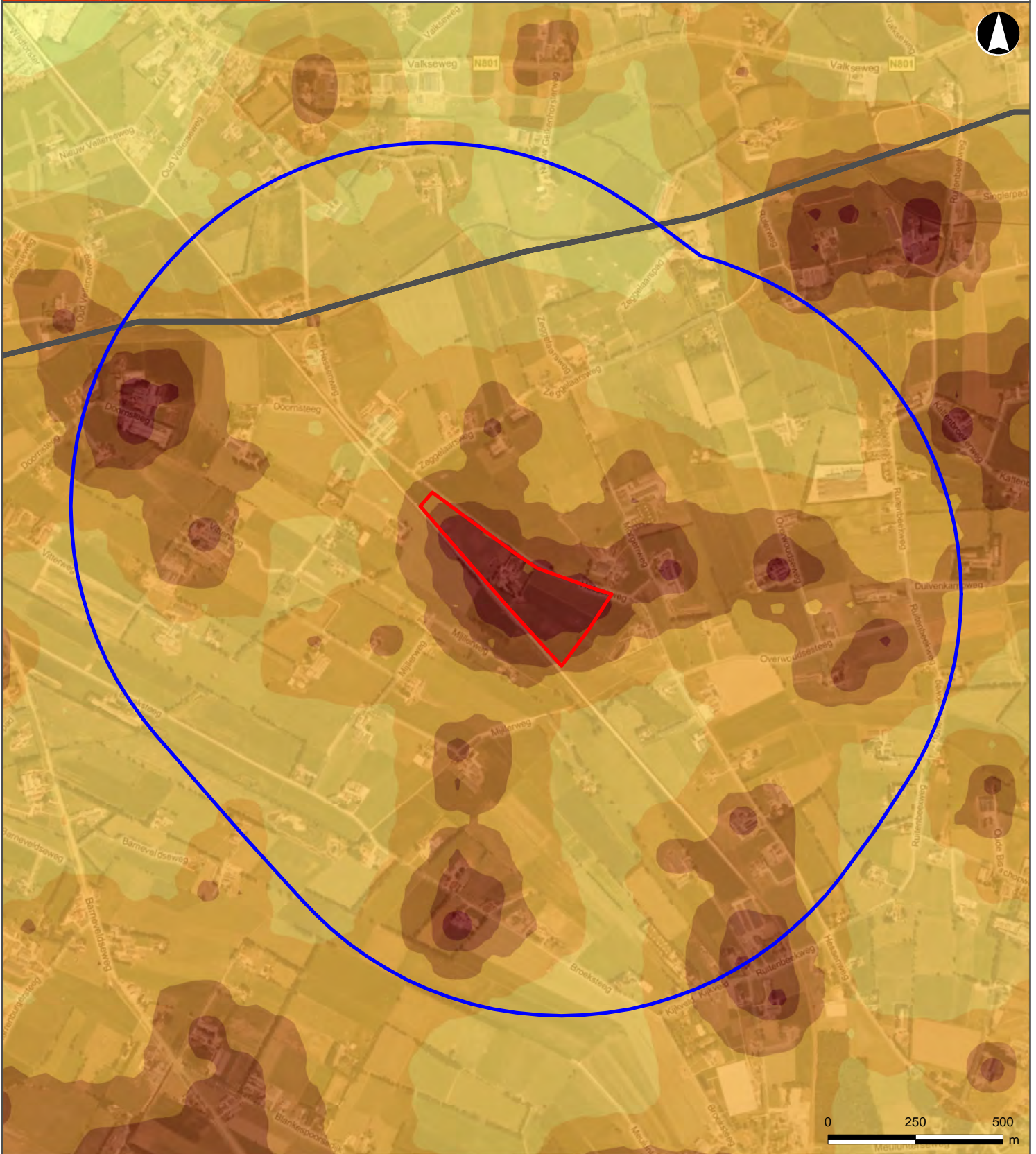
Opdrachtgever: Stichting Vernieuwing Gelderse Vallei, Dienst Landelijk Gebied en de provincie Gelderland  
 Projectnummer: 476895  
 Kaartnummer: 476895.014  
 Datum: 19 augustus 2009  
 Auteur: Swen Waschik  
 Formaat: A4  
 Schaal: 1 op 15.000  
 Copyright: © 2009 Microsoft Corporation






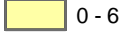








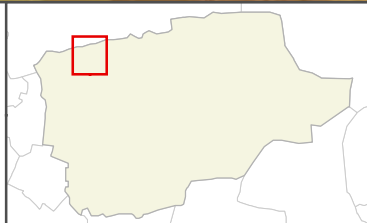
# Achtergrondbelasting omdraaien locatie Kok

Scenario A4:os



## Legenda

	Plangebied	<b>Achtergrondbelasting (in <math>ou_E/m^3</math>)</b>
	1 km buffer	
	Gemeentegrens	
	0 - 6	
	6 - 10	
	10 - 14	
	14 - 20	
	20 - 30	
	30 - 50	
	> 50	



Opdrachtgever: Stichting Vernieuwing Gelderse Vallei, Dienst Landelijk Gebied en de provincie Gelderland  
 Projectnummer: 476895  
 Kaartnummer: 476895.015  
 Datum: 19 augustus 2009  
 Auteur: Swen Waschik  
 Formaat: A4  
 Schaal: 1 op 15.000  
 Copyright: © 2009 Microsoft Corporation